

GM 301

EQUIVALENTS OF BT-BURGMANN AR



Technical features

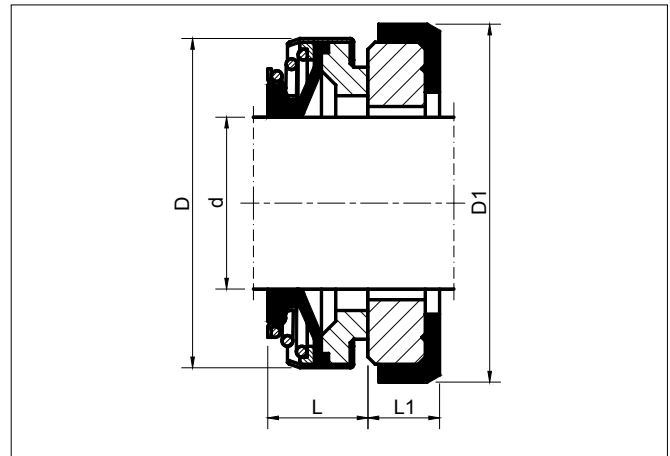
- Single seal
- Unbalanced
- Single spring
- Bi-directional
- Elastomer bellows
- Equivalent to BT-Burgmann AR, Pac-seal type 17, A.J. Roten type 37B

Operating limits

- $d_1 = 6 - 70$ mm
- $p_1 = 0.6$ MPa
- $t = -20 - 180$ °C
- $v_g = 10$ m/s

Materials

- Seal faces: carbon graphite (resin-impreg.), silicon carbide, tungsten carbide, hot-pressed graphite
- Stationary seats: alumina ceramic, Ni-resist, silicon carbide, tungsten carbide
- Bellows: NBR, FPM, EPDM
- Springs, collars, lock rings: AISI 304, 316, 316Ti
- Secondary seals: Neoprene, NBR, FPM, EPDM



d	D	D1	L	L1
6	18	22.0	8	4
8a	20	26.0	11	4
8b	20	22.0	11	4
8c	24	26.0	11	8
9	24	26.0	11	8
10	24	26.0	11	8
11	24	26.0	11	8
12a	24	26.0	11	8
12b	24	26.0	13	8
12c	32	35.0	13	8
13	24	26.0	13	8
14a	28	25.0	13	7
14b	28	28.5	13	8
14c	32	29.5	13	8
14d	32	35.0	13	8
15a	32	29.5	13	8
15b	32	38.0	13	8
15c	35	38.0	13	8
16a	32	29.5	13	8
16b	35	38.0	13	8
16c	39	38.0	13	8
16d	39	42.0	13	8
17	39	42.0	13	8
18	39	42.0	13	8
19	39	42.0	13	8
20a	39	42.0	13	8
20b	42	45.0	13	10
22	42	45.0	13	10
23	47	50.0	14	10
24	47	50.0	14	10
25a	42	50.0	14	10
25b	47	50.0	14	10
26	47	50.0	14	10
28	54	57.0	15	10
30	54	57.0	15	10
32	54	57.0	15	10
35	60	63.0	16	10
38	65	68.0	18	12
40	65	68.0	18	12
45	70	73.0	20	12
50	85	88.0	23	15
55	85	88.0	23	15
60	105	110.0	30	15
70	105	110.0	32	15

Dimensions in mm.