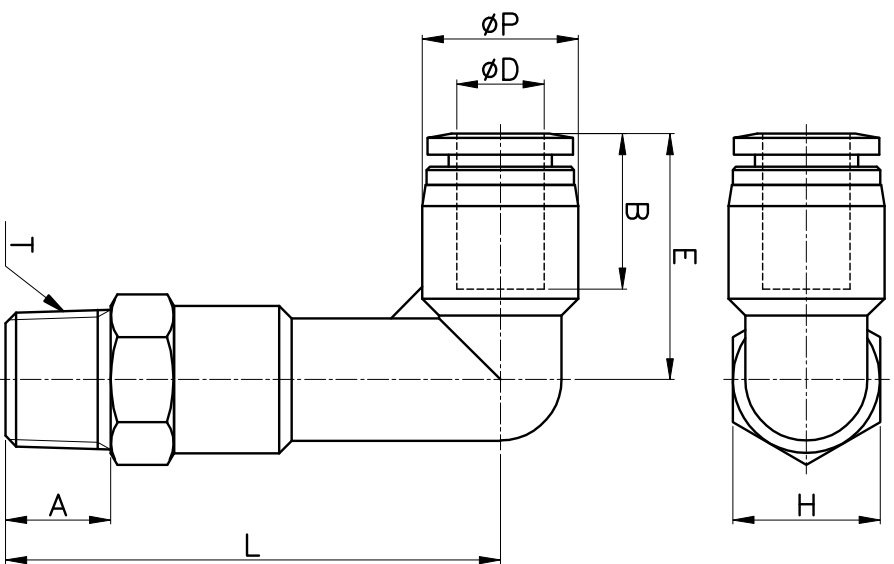


PLL P



MODEL	ØD	ØP	T	L	E	A	B	H (Hex)	ORIFICE	WEIGHT (g)	BOX(EA)
PLL P 04-M5	4	10.5	M5*0.8p	32.5	18.5	4.0	14.8	10	2.5	5.6	50
PLL P 04-M6			M6*1.0p	32.6		4.1		10	8.0	50	
PLL P 04-01			R 1/8	36.5		8.0		10	9.9	50	
PLL P 04-02			R 1/4	38.5		10.0		14	14.9	50	
PLL P 04-03			R 3/8	39.5		11.0		17	23.7	50	
PLL P 06-M5			M5*0.8p	36.5		4.0		12	7.1	50	
PLL P 06-M6	M6*1.0p	36.6	4.1	12	11.8	50					
PLL P 06-01	R 1/8	40.5	8.0	12	13.8	50					
PLL P 06-02	R 1/4	43.5	10.0	14	18.9	50					
PLL P 06-03	R 3/8	44.5	11.0	17	26.1	50					
PLL P 06-04	R 1/2	47.5	14.0	21	40.3	25					
PLL P 08-01	R 1/8	44.0	8.0	14	18.0	50					
PLL P 08-02	R 1/4	47.0	10.0	14	20.9	50					
PLL P 08-03	R 3/8	48.0	11.0	17	27.7	25					
PLL P 08-04	R 1/2	51.0	14.0	21	42.7	25					
PLL P 10-01	R 1/8	47.5	8.0	17	27.7	25					
PLL P 10-02	R 1/4	50.5	10.0	17	29.6	25					
PLL P 10-03	R 3/8	51.5	11.0	17	31.7	25					
PLL P 10-04	R 1/2	54.5	14.0	22	50.5	25					
PLL P 12-01	R 1/8	54.4	8.0	19	42.1	25					
PLL P 12-02	R 1/4	56.4	10.0	19	38.3	25					
PLL P 12-03	R 3/8	57.4	11.0	19	42.0	25					
PLL P 12-04	R 1/2	60.4	14.0	21	51.4	25					